

MACHINERY INFORMATION E02258

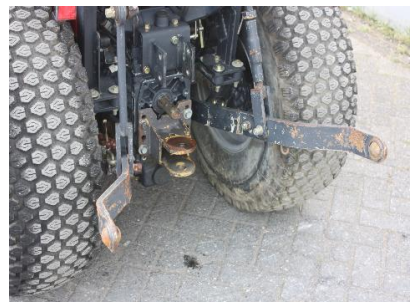


Ref No. : E02258
Brand : MASSEY
Model : 1220 4wd

Year : 2000
Hours : 770.00
Tyres/UC : 85 %

Serial No.: IC1105
Weight : 941.00 kg
Price : € 7300

Massey Ferguson 1220 compact tractor, 3 cylinder diesel engine 21HP, 4-wheel drive, hydrostatic transmission, mid-mower (150cm) and lawntires, power assisted steering, 3-point linkage and pto, 1 spool valve, very good working order, 4 frontweights, OROPS frame



Van Dijk heavy Equipment B.V.
Voltstraat 19
5753 RL Deurne
The Netherlands

Tel. +31 493 313 107
Fax +31 493 316 162
sales@vdhe.nl
www.vandijkheavyequipment.com

KvK/CoC 17078066
BTW/VAT/TVA/UST NL802430685B01

All our services, supplies and transactions are subject to the terms of Van Dijk Heavy Equipment B.V. filed with the Chamber of Commerce in Eindhoven, The Netherlands under number 17078066 dated February 27th, 2009. On request we will send a copy free of charge. The information transmitted is intended only for use by the addressee and may contain confidential and/or privileged material.