

# MACHINERY INFORMATION E03535



**Ref No.** : E03535

**Year** : 1993

**Serial No.:** 248/01/1459

**Brand** : FENDT

**Hours** : 6294.00

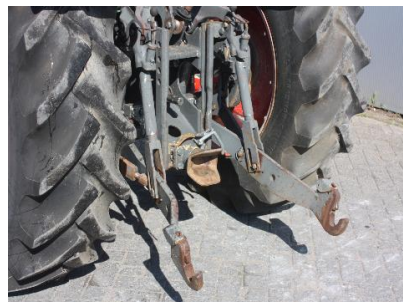
**Weight** : 2640.00 kg

**Model** : 280P

**Tyres/UC:** 70 %

**Price** : € 9800

Original Fendt 280P Orchard tractor, Deutz F4L913 4 cylinder engine, powersteering, 4 cyl.engine, 14.9R30 and 7.50-18 tyres, 3 point linkage, pto, electronic linkage (working order), original condition, clean and good tractor



Van Dijk Heavy Equipment B.V.  
Voltstraat 19  
5753 RL Deurne  
The Netherlands

Tel. +31 493 313 107  
Fax +31 493 316 162  
sales@vdhe.com  
www.vandijkheavyequipment.com

KvK/CoC 17078066  
BTW/VAT/TVA/UST NL802430685B01

All our services, supplies and transactions are subject to the terms of Van Dijk Heavy Equipment B.V. filed with the Chamber of Commerce in Eindhoven, The Netherlands under number 17078066 dated February 27th, 2009. On request we will send a copy free of charge. The information transmitted is intended only for use by the addressee and may contain confidential and/or privileged material.