

MACHINERY INFORMATION E03934

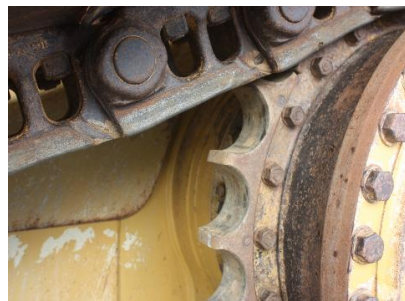


Ref No. : E03934
Brand : CATERPILLAR
Model : D6R XL

Year : 1998
Hours : 13280.00
Tyres/UC : 60 %

Serial No.: 4JR00436
Weight : 25500.00 kg
Price : € 59000

Caterpillar D6R XL, E-rops cab, Caterpillar 3306DI engine with 175HP (130kW), semi U blade with tilt, 3 speed powershift transmission, differential steering, rear view camera, undercarriage 60% remaining, 700mm pads, drawbar, front and rear work lights, CE marked. Machine comes straight out of work and is in very good working order and clean condition. Ripper can be fitted and machine can be painted if required at extra cost.



Van Dijk Heavy Equipment B.V.
Voltstraat 19
5753 RL Deurne
The Netherlands

Tel. +31 493 313 107
Fax +31 493 316 162
sales@vdhe.com
www.vandijkheavyequipment.com

KvK/CoC 17078066
BTW/VAT/TVA/UST NL802430685B01