

# MACHINERY INFORMATION E03419

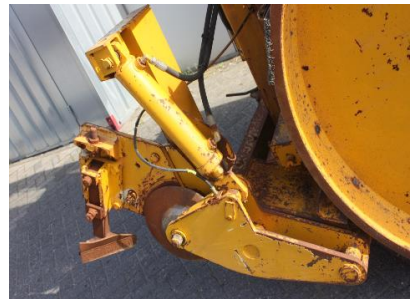


Ref No. : E03419  
Brand : AVELING  
Model : HDC15

Year : 1996  
Hour meter reading : 4587.00  
Tyres/UC : 100 %

Serial No. : 96CE412  
Weight : 15000.00 kg  
Price : € 14500

Aveling Barford HDC15, 15 Ton dead weight tarmac/asphalt roller, enclosed cab, Perkins 1004-4 engine, 85HP (62kW), double drum, hydrostatic transmission, 610mm front and 1060mm rear drum width, water spray system, hydr. operated side tarmac cutter. Machine is workshop tested, repaired and is in very good and clean condition. Can be painted at extra cost.



Van Dijk Heavy Equipment B.V.  
Voltstraat 19  
5753 RL Deurne  
The Netherlands

Tel. +31 493 313 107  
Fax +31 493 316 162  
sales@vdhe.com  
www.vandijkheavyequipment.com

KvK/CoC 17078066  
BTW/VAT/TVA/UST NL802430685B01